



KEY VOCABULARY

Belfast

the capital city of Northern Ireland on the east coast

Londonderry

the second-largest city in Northern Ireland

republic

a state in which supreme power is held by the people who have an elected president rather than a monarch

partition

the dividing of a country into separate areas of government

Lough Neagh

a lake in Northern Ireland and the largest lake in the British Isles

Giant's Causeway

an area of basalt columns; the result of an ancient volcanic eruption

Unionists

people who are in favour of the union of Northern Ireland with Great Britain

Nationalists

people who supports political independence for a country



Finn MacCool

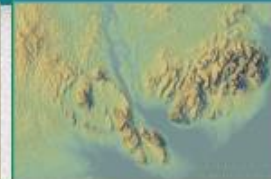
legend says that Finn MacCool made Lough Neagh as well as the Giant's Causeway



Marble Arch Caves



Ring of Gullion



Lough Neagh



Giant's Causeway

