

spring

summer

autumn

winter

rain gauge

thermometer

weather vane

data

clouds

flood

hurricane

meteorologist

the **season, after winter**, when the temperature begins to rise, plants begin to grow and animals come out from hibernation

the **warmest season, coming after spring**, when the days are long because the sun rises earlier and sets later

the season, **after summer, where the days get shorter**, crops can be harvested and the leaves begin to fall from the trees

the **coldest season**, trees are often bare and some animals hibernate; the days are shorter

a tool used to **measure how much rain has fallen**

a tool used to **measure the temperature**

a tool used to find out in **which direction the wind is blowing**

a **collection of facts, often numbers**, that can give us information

a cloud is a **collection of tiny droplets of water in the sky**; when the droplets fall they become rain

an **overflow of water**

a **powerful storm** with strong winds

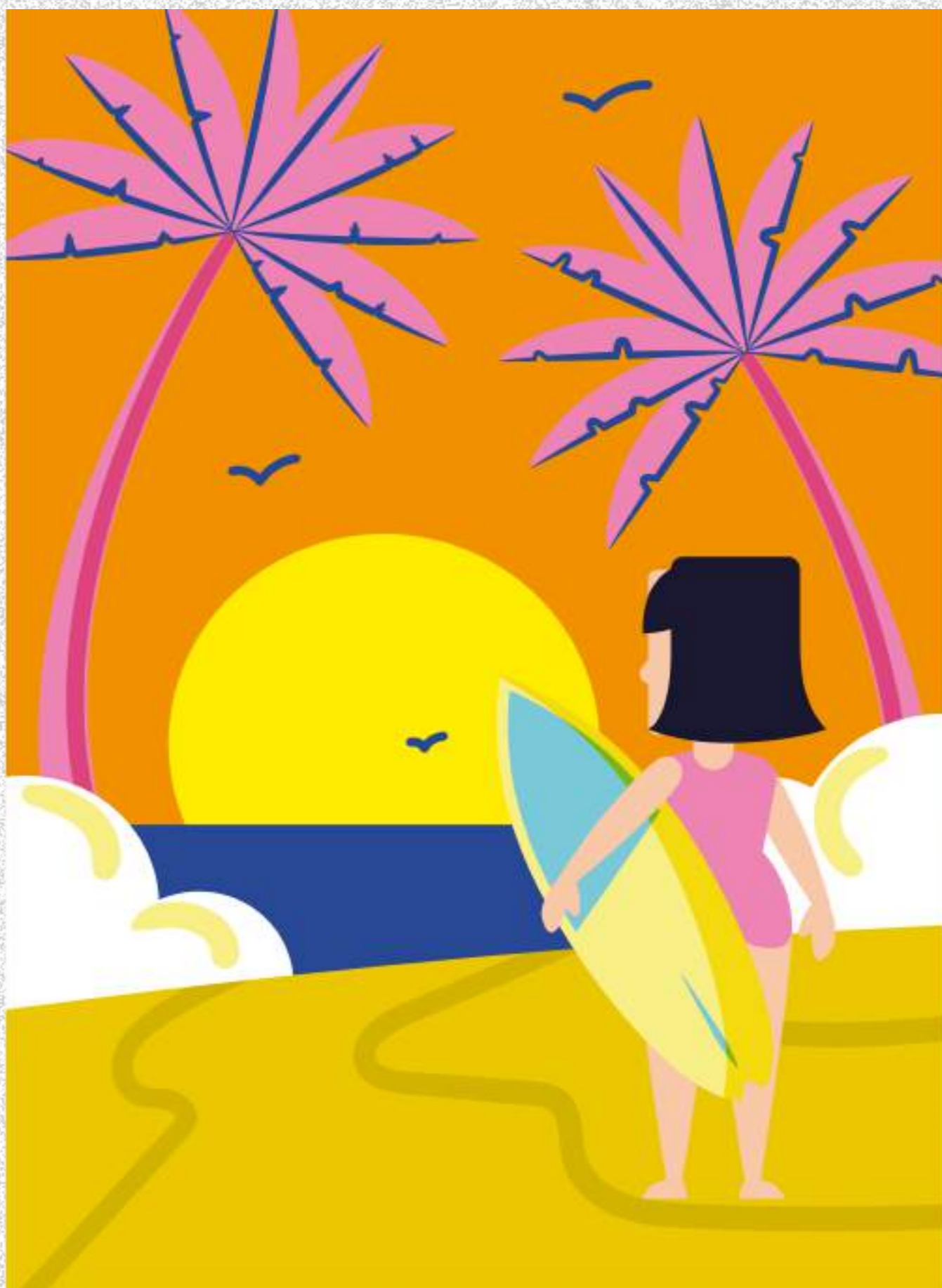
a scientist who **studies the weather**

cirrus	cumulus	stratus
white, thin and wispy	white, fluffy	grey, cover the whole sky
		

spring



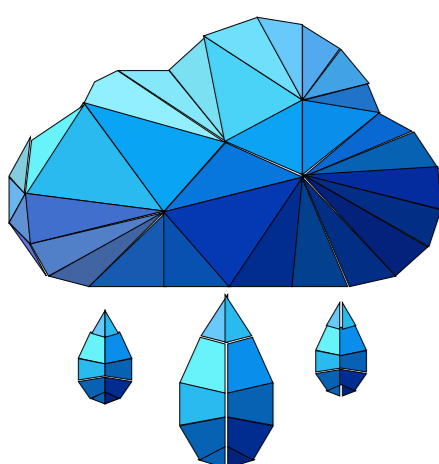
winter



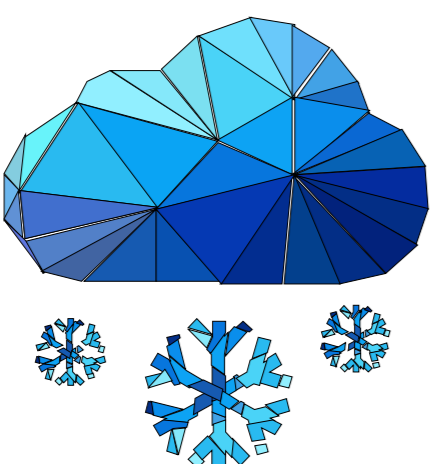
summer

autumn

rain



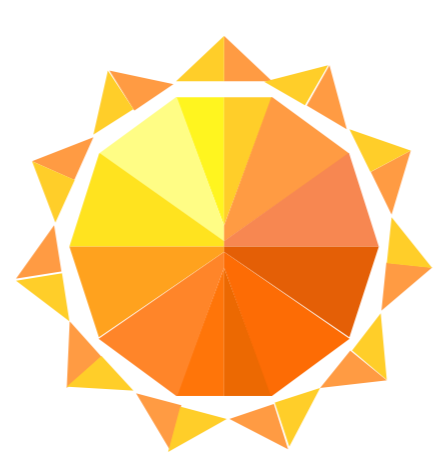
snow



cloud



sun



storm



wind

