

KEY
VOCABULARY

Plant

A **living thing that grows in the earth** and has roots, leaves and a stem e.g. grass, trees, bushes, flowering plants

Root

The **part of a plant that acts as an anchor**, fixing the plant into the ground. Roots also absorb water to help the plant to grow

Stem

The part of the plant that grows above the ground. The leaves and flowers grow from it. The stem is also used to **transport water around the plant**

Leaves

A plant's leaves **absorb sunlight and turn it into energy** that the plant uses to grow

Flowers

The part of a plant that **bears the seed**

Nutrients

Goodness required for life and growth. Plants absorb nutrients from the soil

Absorb

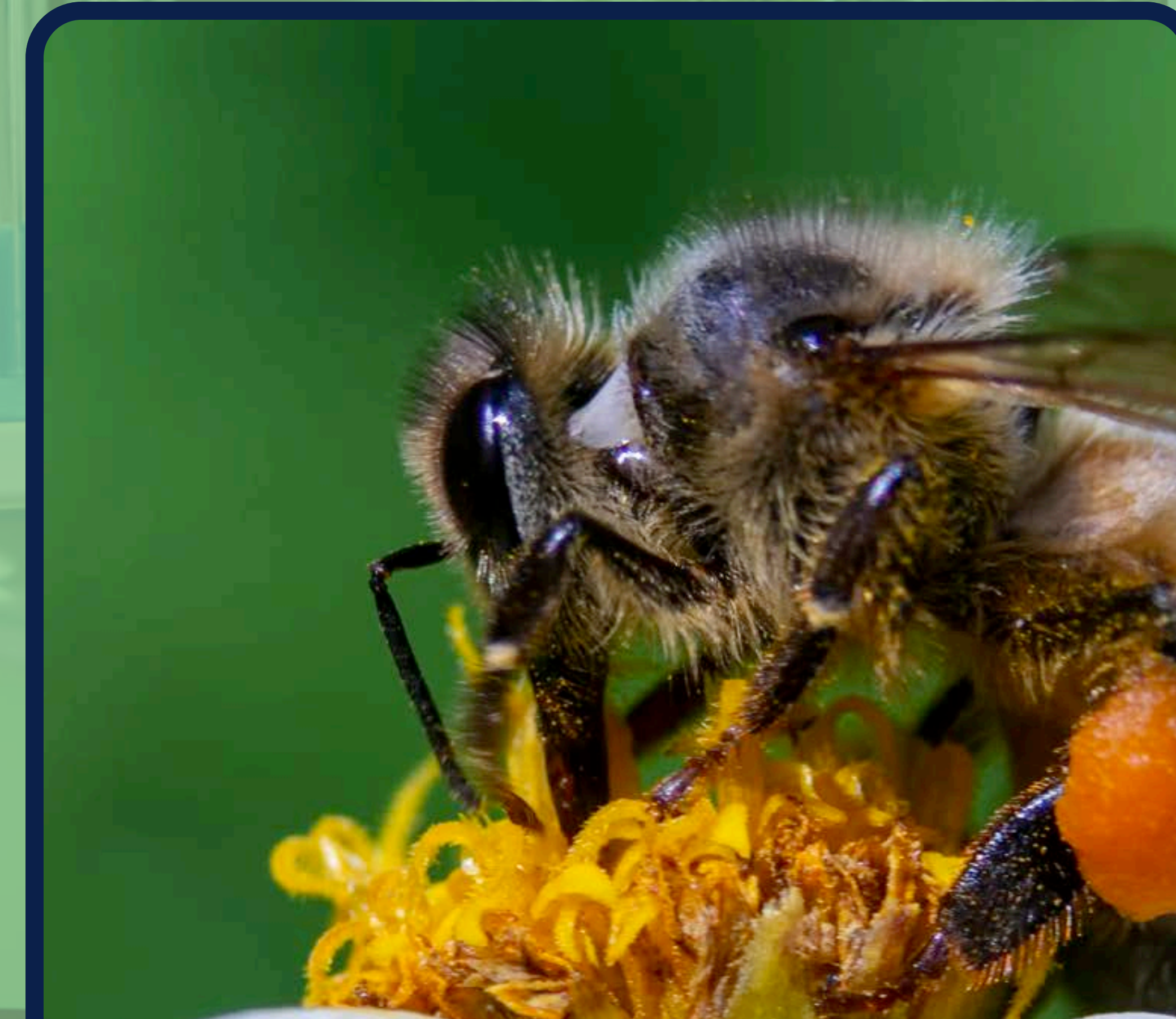
To **take in** or soak up

Pollination

The **transfer of pollen** from one part of a plant to another

Dispersal

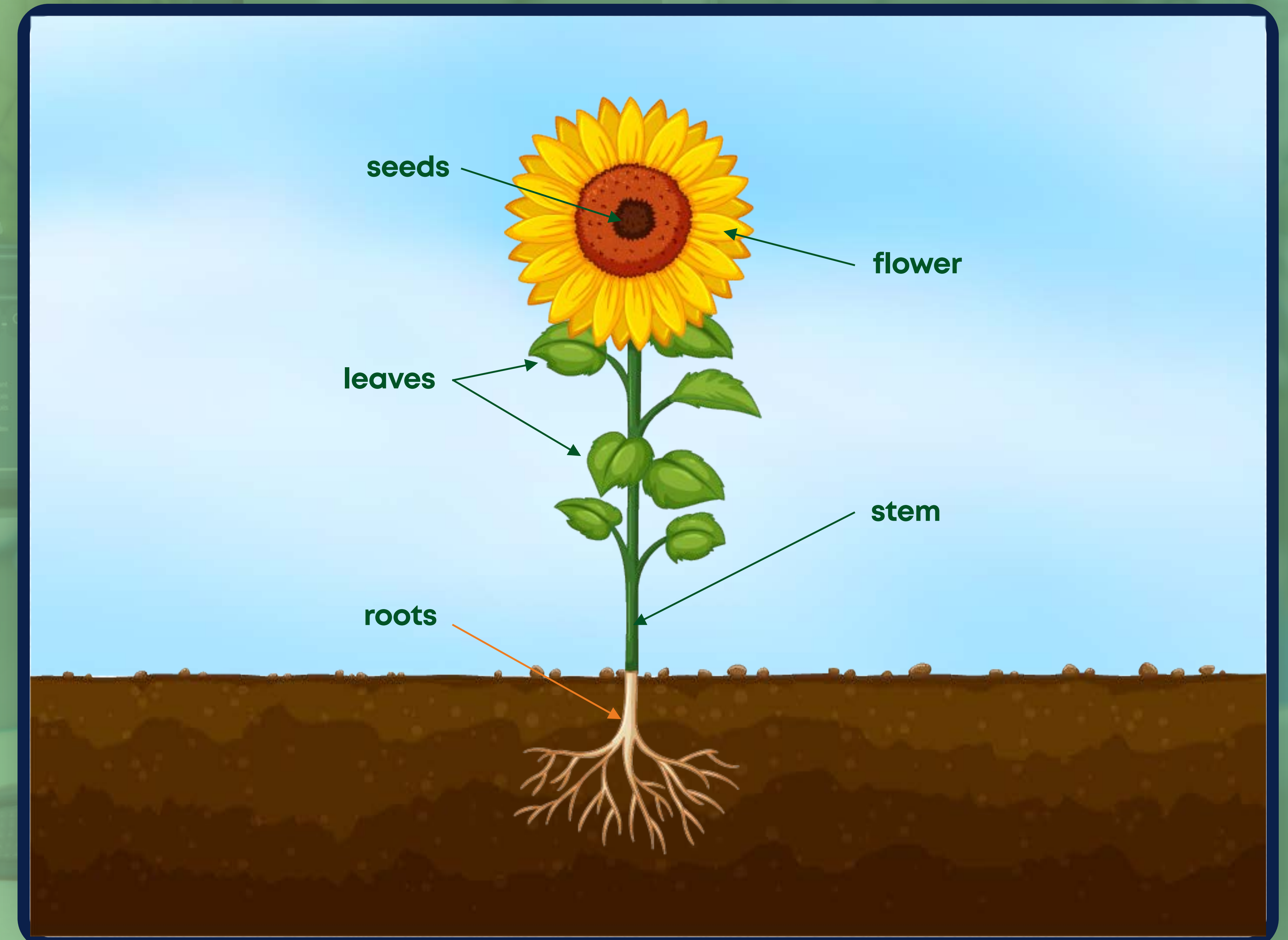
Spreading things out over an area, seeds do this to help to reproduce



Many flowers rely on animals to help with pollination by moving pollen from one flower to another



Poppy seeds are dispersed from a 'pepper pot' head, when the wind blows the seeds shake out



Joseph Banks

A botanist who travelled the world and gathered over 30,000 specimens of plants



George Washington Carver

A botanist known for his work on replenishing soil by planting peanuts and sweet potatoes

