

Spring

Summer

Autumn

Winter

Rain gauge

Thermometer

Weather Vane

Data

Clouds

Flood

Hurricane

Meteorologist

The **season, after winter**, when the temperature begins to rise, plants begin to grow and animals come out from hibernation

The **warmest season, coming after spring**, when the days are long because the sun rises earlier and sets later

The season, **after summer, where the days get shorter**, crops can be harvested and the leaves begin to fall from the trees

The **coldest season**, trees are often bare and some animals hibernate; the days are shorter

A tool used to **measure how much rain has fallen**

A tool used to **measure the temperature**

A tool used to find out in **which direction the wind is blowing**




A **collection of facts, often numbers**, that can give us information

A cloud is a **collection of tiny droplets of water in the sky**; when the droplets fall they become rain

An **overflow of water**

A **powerful storm** with strong winds

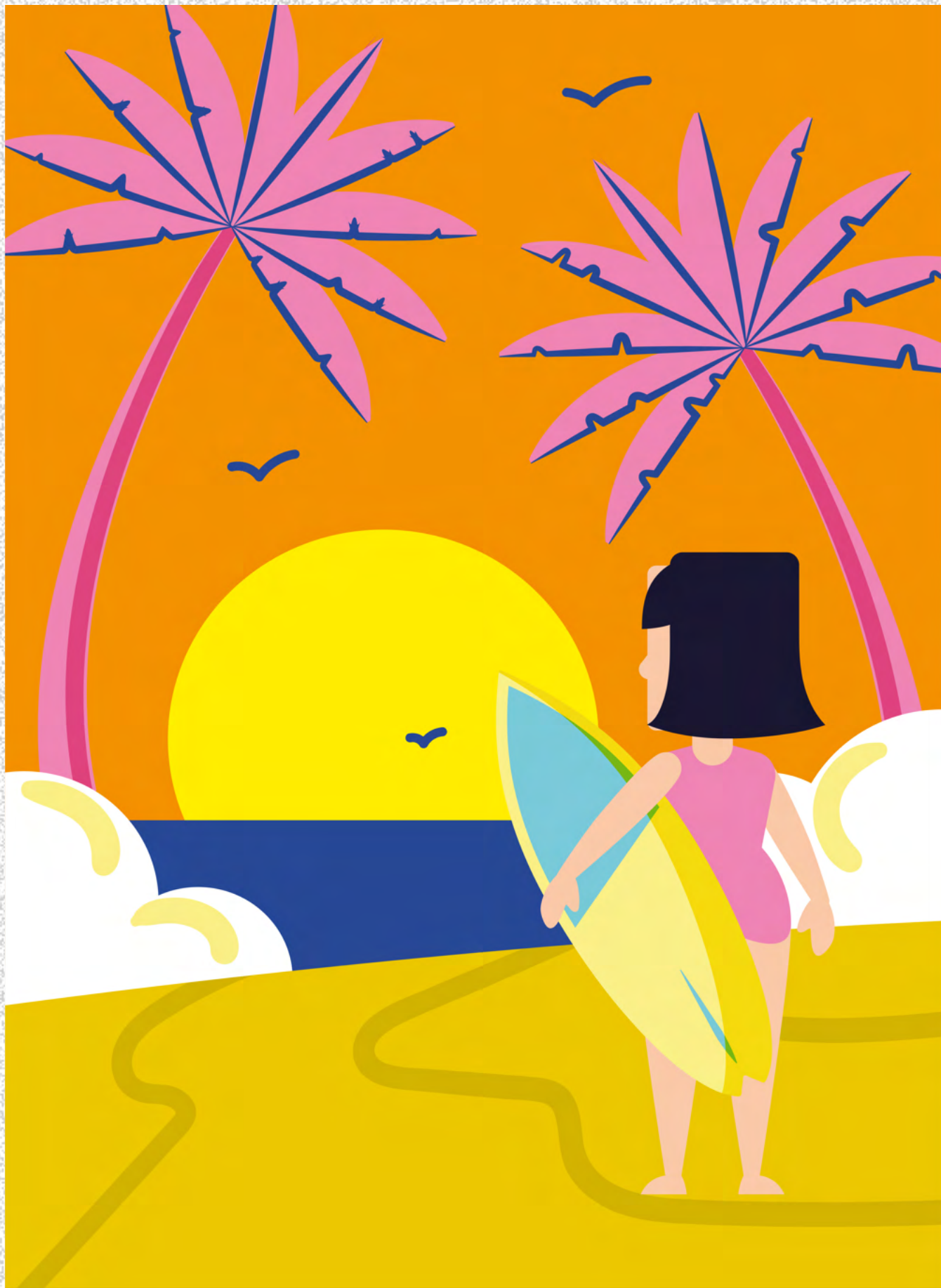
A scientist who **studies the weather**

| Cirrus | Cumulus | Stratus |
|---|---|---|
| white, thin and wispy | white, fluffy | grey, cover the whole sky |
|  |  |  |

SPRING



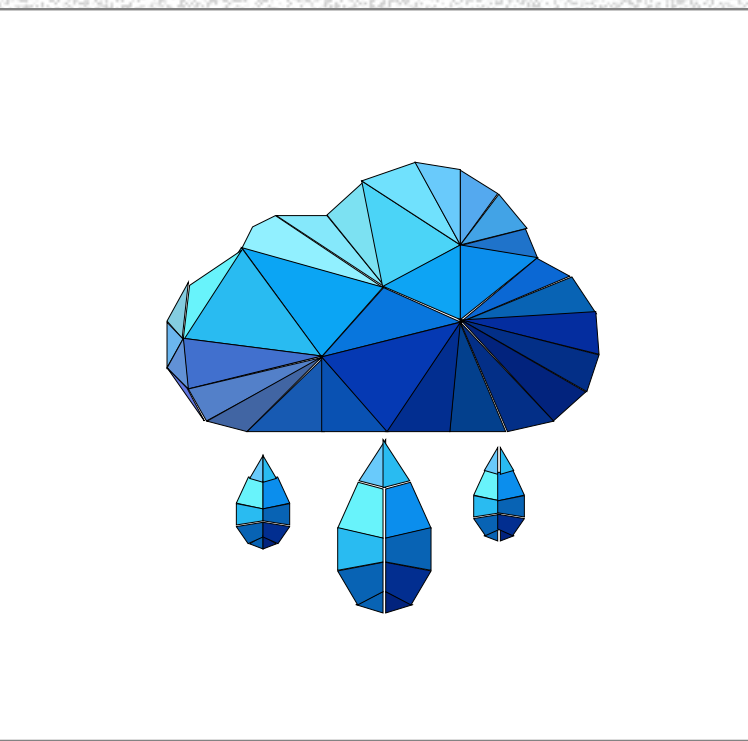
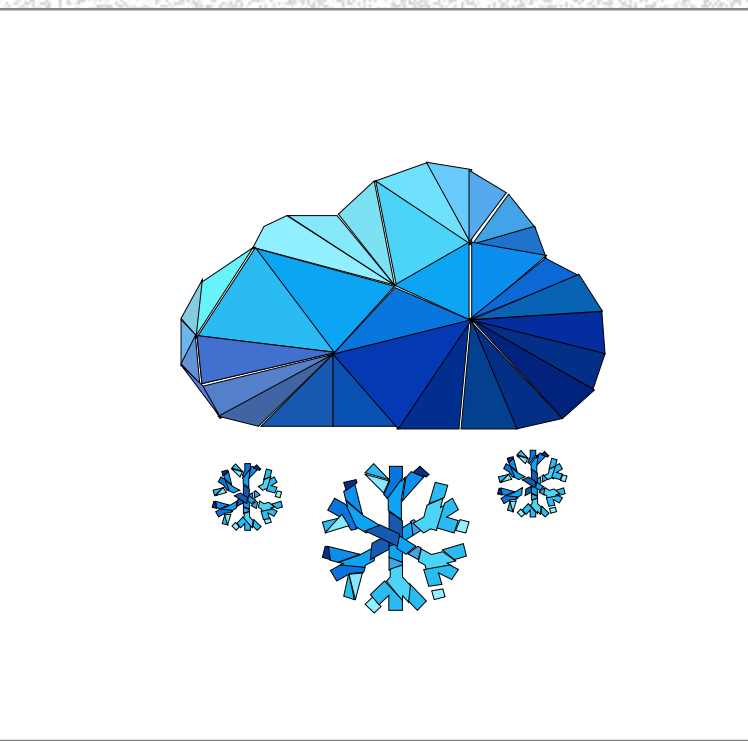
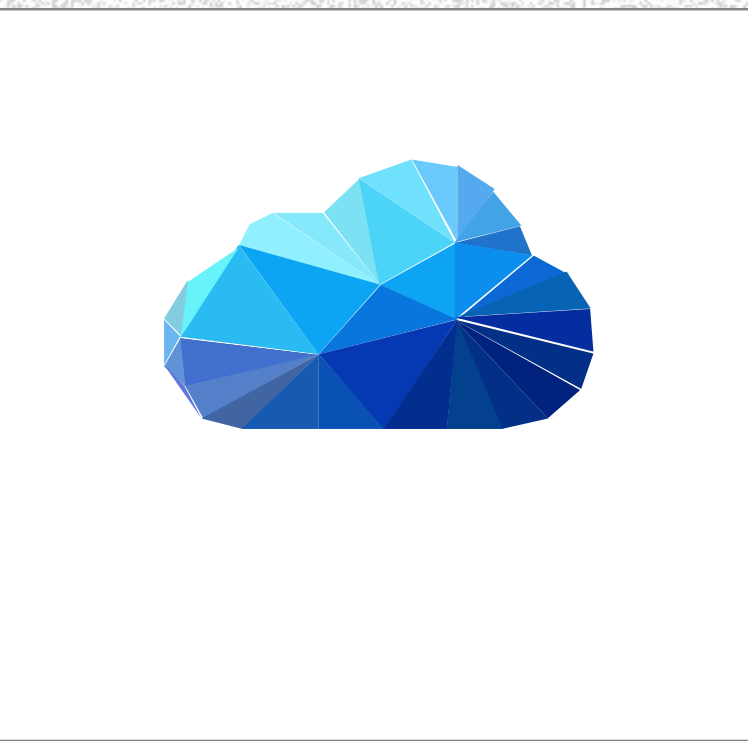
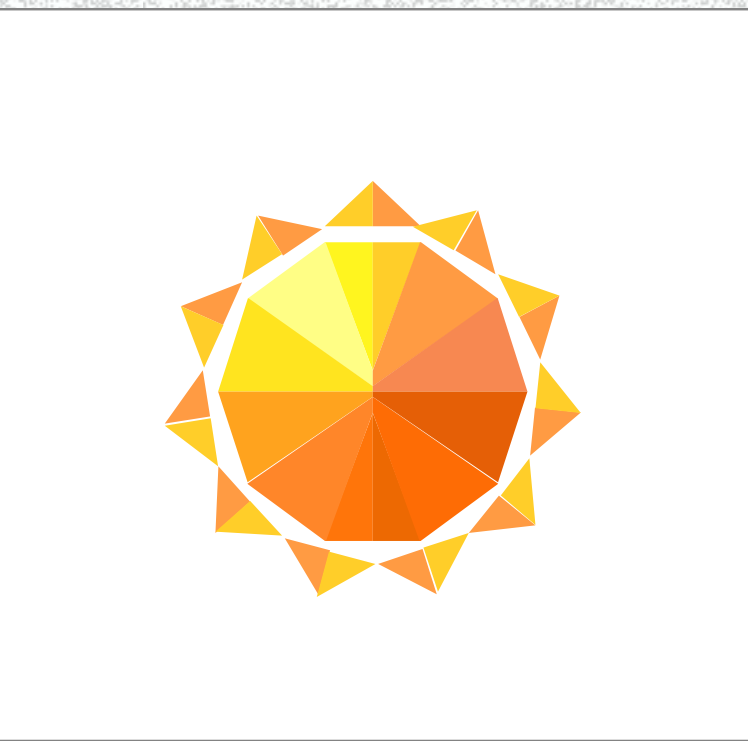

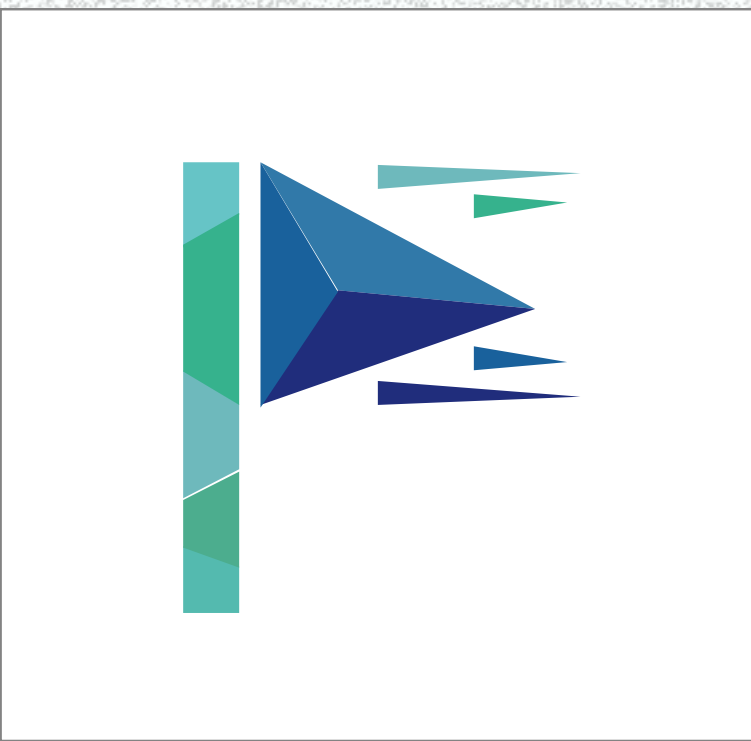
WINTER



SUMMER



AUTUMN

| Rain | Snow | Cloud | Sun | Storm | Wind |
|--|---|---|--|---|---|
|  |  |  |  |  |  |