

St. John the Baptist Catholic Primary School



We will prepare the way by loving, living and
learning with the Lord

Friday 4th July 2025



This week has witnessed our school community embodying the true spirit of Catholic fellowship through our participation in CAFOD's Pledge Day. As we embrace this Jubilee Year—a significant period of renewal, freedom and celebration—we are called to serve as pilgrims of hope, demonstrating our commitment to caring for our common home whilst supporting our sisters and brothers who face the challenges of war, hunger and poverty. Our collective Jubilee Pledge represents a sustained, whole-school dedication to building the world that reflects God's vision for humanity.

I have been absolutely delighted by our Year One pupils, who have been busy selling tip tops to raise money for charity. Their wonderful efforts have led to an amazing decision to donate £100 to CAFOD as part of their class pledge—what a fantastic example of kindness and giving from such young pupils!

Additionally, this week provided an excellent opportunity for our pupils to experience their forthcoming academic journey through our transition morning. Each class visited their new classrooms, meeting their future teachers and gaining valuable insights into the expectations of their next year group. The excitement and positive atmosphere throughout the school gives me confidence that we are well-positioned for another successful academic year beginning in September.



Reflection

Fourteenth Sunday in Ordinary Time

In this Sunday's gospel, 72 people are sent out on a mission by Jesus to towns and villages all over the place. They are sent on ahead to prepare the way for Jesus and his disciples.

Jesus tells these people that there is much work to do, but not enough people to do it.

"There is a large harvest, but few workers to gather it in." He is asking for their help.

The 72 followers are told that they might not be welcome in every town. Not everyone will want to hear their message. Why do you think this might be?

Making a change can be hard. People often like to stick with what they know. The disciples are asking the people they visit to change their lives and to follow Jesus now. But the people might be too busy to listen, or just not ready to change their ways. They might be more concerned about having the latest things, getting more money, rather than listening to Jesus' message.

The 72 people hoped they would be welcomed, but Jesus warned them it might not always be that way. Do you always welcome others? Or can you sometimes be like those who turned the 72 away?

This week try to make sure that you are always welcoming to others. What will you do? And how will you go out and follow Jesus, sharing his good news with others?

Our Virtues

Faith-Filled
and
Hopeful

loving hopeful
attentive learned curious
faith-filled wise
generous learned grateful
eloquent prophetic discerning
intentional compassionate
truthful active

Catholic Social Teaching

Solidarity and the Common Good

In Catholic Social Teaching, both solidarity and the common good are interconnected and essential for building a just and flourishing society. Solidarity is about working together to address inequalities and promote the dignity of all, while the common good emphasises the need for a society where everyone's well-being is prioritised.

Our Pope's Prayer Intention

In July "Let us pray that we might again learn how to discern, to know how to choose paths of life and reject everything that leads us away from Christ and the Gospel."





Polite Reminders

We understand that times are hard for many people, but we are seeing increasingly lower levels of donations for our non- uniform days. We do try to plan the need for donations so they are spaced out across the year. Therefore, we ask you to please do your very best to send your child in to school with the correct donation, if you choose for them to participate in non- uniform days. Remember - all money raised is invested back into school, to provide exciting opportunities for all children across the year. Without the money raised by our excellent PTFA, we wouldn't be able to offer all the amazing experiences that we currently do.



Our next non- uniform day is on Wednesday 9th July when we ask for donations of cakes.



A reminder that school will close to all pupils at 2.05pm on our last day - Friday 18th July. Thank you.



Can we please ask that you help us to prevent any damage to staff cars. It is unfortunate that we have an open carpark but our staff have no other choice but to park there. Over the last few weeks, I have had to remind some families not to allow their children to use scooters around cars and across the car park. This is first to ensure that your children are safe but also to prevent any accidental damage.

This week, Mrs Righton had to ask some parents not to sit on the car bonnets of staff vehicles! This is not acceptable. Please ensure that you wait on the paths, close to each gate and ensure that your child is standing with you. Thank you for your support in this matter.



Classes for Next Year

I'm sure that everyone is interested in knowing which teachers will be in each year group, from September. See below for details.

Class Teacher	Lead Teacher/ s	Main Support
Nursery	Mrs Dolphin	Miss Cherry/ Miss King
Reception	Mrs Day	Mrs Baylon
Year One	Mrs Patterson	Mrs Worth
Year Two	Mrs Piskula	Mrs O'Kelly
Year Three	Miss Breslin	Miss Lowe
Year Four	Miss Morton	Miss Ward
Year Five	Mrs Turner/ Mrs Dixon	Mrs Blundell
Year Six	Mrs Richmond/ Mr Gallagher	Mrs Hastings

**TEACH
LOVE
INSPIRE**



To help out with our planned Beach Day on 17th July, our PTFA are asking for donations of buckets, spade, sandpits and water trays. These can be brought into school at any time from this Monday. Thank you



St John the Baptist Primary School

SUMMER FAIR

Wednesday 9th July
3:30pm - 4:30pm

- TOMBOLA • HOT DOGS • GAMES
- REFRESHMENT • RAFFLE

50p Entrance fee

Please contact the school if you would like more information about stall hire.

Arran Way, Birmingham B360QE
0121 770 1892

Parentkind
Member Association



Awards

Star of the Week

Our Star of the Week for Early Years and Key Stage One is

Kye J



Our Stars of the Week for Key Stage Two are Lily- Rose J and

Taylor S

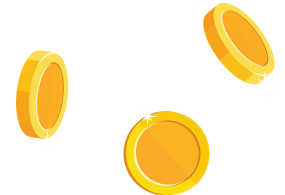


Virtues



Nursery	Ned E
Reception	Minnie W
Year 1	Gracie- Leigh A
Year 2	Splendid I- O
Year 3	Daisie- Maye W
Year 4	Thomas O
Year 5	Lena A
Year 6	-

Star Readers



Noah P	Gracie- Leigh A
Isla E	Jack L
Daisie – Maye W	Oniellia F
Jax R	Mia D
Natalia D	Marcus O
Michael D	





Celebrations



Birthdays

Lyla K Year 4
Ellis S Year 4



We wish you a very happy birthday from everyone at St.
John's!

Ready to Learn

Our most punctual class, this week, who were in everyday, on time and ready to learn is...

Year 4

& Reception

Well Done

Attendance

The class with the highest attendance this week is...

Year

5

99.2%





Ordering Meals on Blue Runner

A reminder to please continue to pre-order your child's meals on Blue Runner. Thank you to everyone that has already activated their account. If you do still need to activate your account and need help, please pop into/ or call the school office.

FOOD FESTIVAL
By Aspens

LUNCHTIME

WORLD
Week 3

	THE MAIN EVENT	MEAT-FREE MAGIC <small>veggie Dish</small>	RAINBOW ALLEY <small>Vegetables and Salads</small>	BIG TOPPING <small>Filled Jackets</small>	DESSERT TROLLEY
<p>Spring Summer 2025 05/05/25, 26/05/25, 16/06/25, 07/07/25, 28/07/25, 18/08/25, 08/09/25, 29/09/25, 20/10/25</p>					
MONDAY	BBQ Sweetcorn Pizza Slice with Wedges	Macaroni Cheese	Green Salad	Beans, Cheese or Tuna Mayo	Strawberry Frozen Yoghurt
TUESDAY	Mild Chilli Con Carne with Rice	Vegetable Bean Chilli with Rice	Sweetcorn	Beans, Cheese or Tuna Mayo	Marble Cookie
WEDNESDAY	Roast Chicken, Stuffing, Skin on Roasties and Gravy	Cheese and Onion Slice with Skin on Roasties & Gravy	Carrots and Peas	Beans, Cheese or Tuna Mayo	Sweet Potato Brownie
THURSDAY	Caribbean Chicken and Pineapple Stew with Rice	Sweet Potato Coconut Bean Stew with Rice	Sweetcorn	Beans, Cheese or Tuna Mayo	Toffee Apple Crumble and Custard
FRIDAY	Golden Fish Fingers and Chips	Vegetable Fingers and Chips	Baked Beans	Beans, Cheese or Tuna Mayo	Brookie (Brownie & Cookie Mix)

DAILY SANDWICHES AVAILABLE

**DAILY SALAD BOWL,
FRESHLY BAKED BREAD,
YOGHURTS AND
CUT FRUIT**

AVAILABLE DAILY

PASTA TWIRLER

AVAILABLE EVERY DAY

Topped Pasta
Hot Pasta
topped with
Homemade
Tomato Sauce &
Cheese

W1

Celebrate Wimbledon

Thursday 17th July

Norrie's Hamburger & Chips
Raducanu's Veggie Sausage &
Chips

Tennis Ball Baked Beans
Or
Green Grass Peas

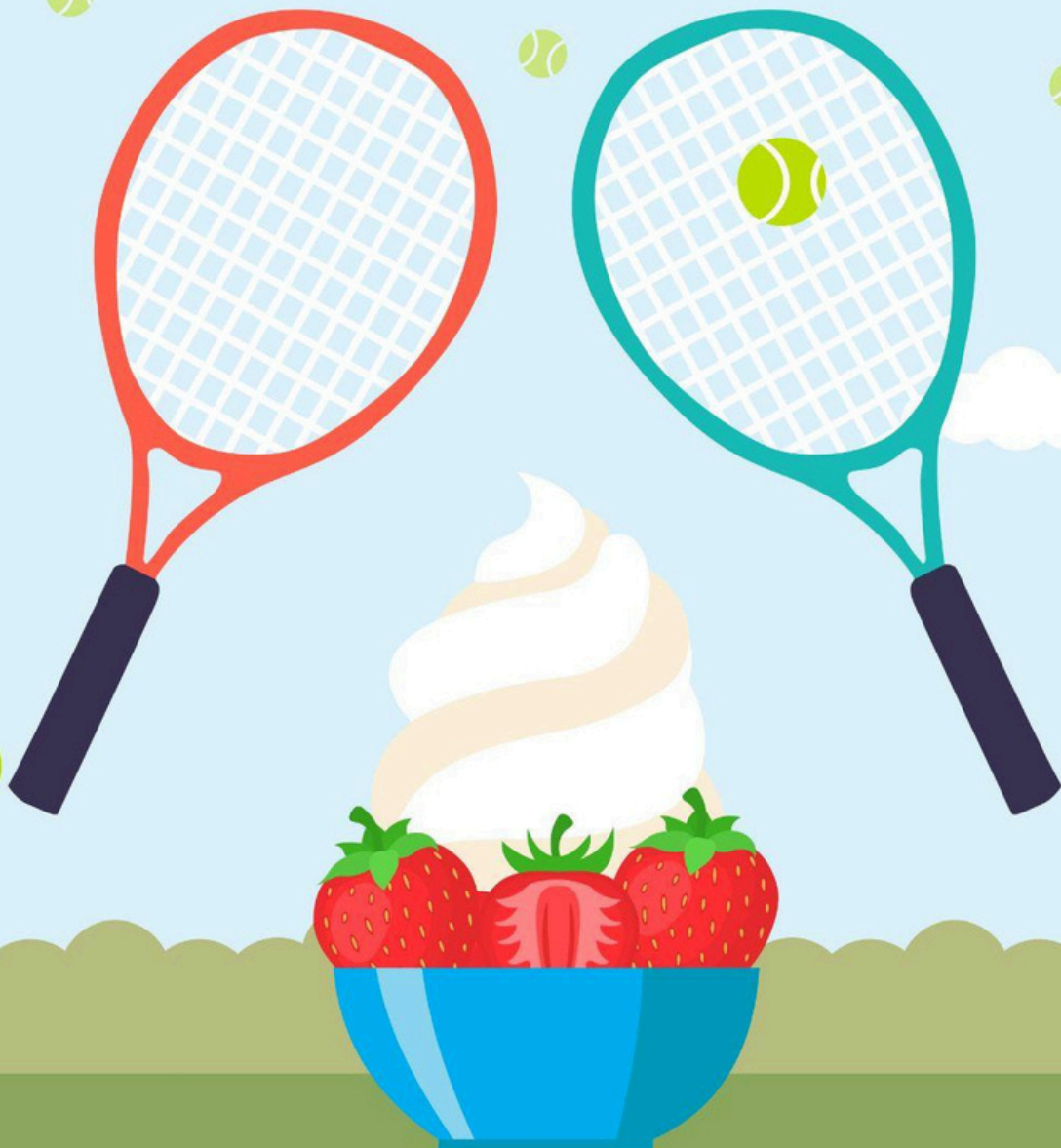
Strawberry Ice Cream with
Strawberry Sauce

Jacket Potato
Topped Pasta





Celebrate Wimbledon





GET PEDALLING

Solihull



FREE 2 Day Learn to Ride Course

FUN cycle training available for children aged 8+

A two-day course for children to have fun learning to ride, gain basic cycle skills and grow in confidence on their bikes.

North Solihull Sports Centre Athletics Track – July 22nd & 23rd or 28th & 29th

Tudor Grange Cycle Track – July 24th & 25th or 30th & 31st

We encourage riders to bring their own bike/helmet. However, there is a chance to borrow equipment if needed, please let us know upon booking.

Please note, there are a limited number and sizes of children's bikes and will they be allocated on a first come first served basis

Book via: <https://solihull.cycleready.co.uk/publicbooking>



If you would like further information please email bikeability@solihull.gov.uk





Online Safety

A PDF of these Q&A's can be found here: www.A-PDF.com to remove the watermark.



7 questions to help you start a conversation with your child about online safety

#WakeUpWednesday



1

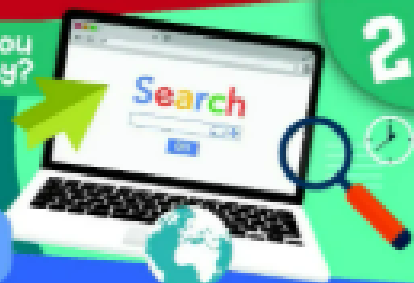


Which apps/games are you using at the moment?

THIS WILL GIVE YOU A GOOD OVERVIEW OF THE TYPES OF THINGS YOUR CHILDREN ARE DOING ON THEIR DEVICES, ALONG WITH THEIR INTERESTS. REMEMBER THAT THEY MIGHT NOT TELL YOU EVERYTHING THEY ARE DOING, SO IT IS A GOOD IDEA TO ASK THEM TO SHOW YOU THEIR DEVICE, BECAUSE NEW APPS AND GAMES ARE RELEASED REGULARLY. IT IS IMPORTANT TO HAVE THIS CONVERSATION OFTEN TO ENSURE YOU ARE UP TO DATE WITH WHAT THEY ARE DOING.

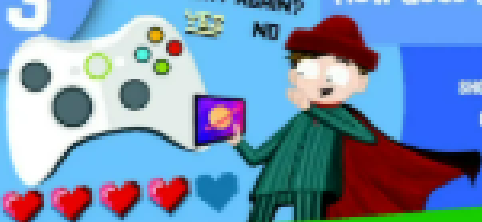
Which websites do you enjoy using and why?

AS IN THE TIP ABOVE, ASKING THIS QUESTION WILL ALLOW YOU TO FIND OUT WHAT YOUR CHILD IS DOING ONLINE, AND ENCOURAGE POSITIVE CONVERSATIONS ABOUT THEIR ONLINE ACTIVITY. ASK THEM HOW THEY USE THE WEBSITES, AND TAKE AN INTEREST IN HOW THEY CAN USE THEM IN A POSITIVE WAY. ALSO ASKING THEM TO SHOW YOU IF POSSIBLE.



2

3

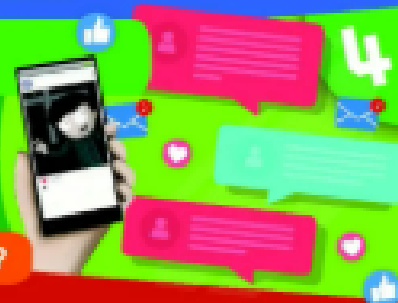


How does this game/app work? Can I play?

SHOW A GENUINE INTEREST IN WHAT THEY ARE DOING. WHILE YOU ARE PLAYING A GAME, OR USING AN APP WITH THEM, IT MIGHT HIGHLIGHT SOME THINGS THAT THEY DON'T NECESSARILY THINK IS A DANGER TO THEM, IF THEY ACT LIKE THEY DON'T WANT TO SHARE THEIR ACTIVITIES WITH YOU, QUESTION WHY.

Do you have any online friends?

CHILDREN CAN FORM POSITIVE RELATIONSHIPS WITH PEOPLE ONLINE, AND THIS CAN BECOME MORE COMMON THANKS TO ONLINE MULTI-PLAYER OPTIONS, BUT THEY MAY NOT FULLY UNDERSTAND THE DIFFERENCE BETWEEN A FRIEND AND A STRANGER. YOU COULD MAKE THE DANGER MORE SPECIFIC TO YOUR CHILD, FOR EXAMPLE, TALKING TO MEET A PERSON YOU MEET THAT YOU THINK IS A FRIEND'S FRIEND. THEY MAY NOT WANT TO SHARE THIS INFORMATION WITH YOU, SO ENSURE YOU TEACH THEM ABOUT REAL LIFE RELATIONSHIPS.



4

5

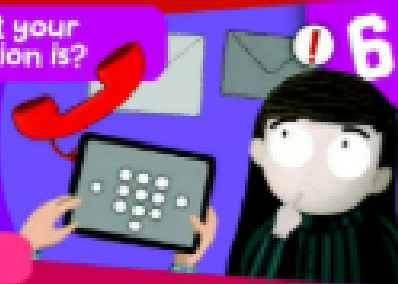


Do you know where to go for help?

ALTHOUGH YOU MAY BE THE ADULT THEY TRUST THE MOST, SOME CHILDREN STRUGGLE TO TALK ABOUT WHAT HAPPENS ONLINE DUE TO CONFUSION OR EMBARRASSMENT. BECAUSE OF THIS THEY MAY STRUGGLE TO APPROACH THE NORMAL PEOPLE WHO WOULD HELP, SUCH AS YOURSELF OR A TEACHER. HAVE A CHAT TO YOUR CHILD ABOUT EXACTLY WHOSE THEY CAN GO FOR HELP, AND HOW THEY CAN REPORT ANY ACTIVITY THAT THEY BELIEVE IS INAPPROPRIATE ONLINE.

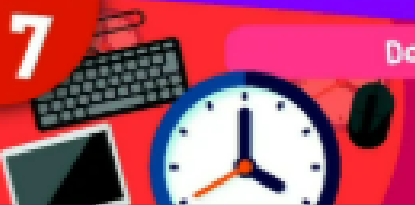
Do you know what your personal information is?

YOUR CHILD MAY BLOCKBOLD KNOW WHAT THEIR PERSONAL INFORMATION IS BUT THEY MIGHT NOT THINK ABOUT HOW IT CAN BE SHARED. HAVE A CONVERSATION ABOUT WHO PERSONAL INFORMATION IS AND HOW THIS CAN AFFECT THEM IF IT IS SHARED BEYOND THE INTENDED AUDIENCE. IT IS IMPORTANT THAT YOUR CHILD UNDERSTANDS THE DANGERS OF SHARING CONTACT DETAILS OR PHOTOS, AS INFORMATION SUCH AS THIS CAN SPREAD QUICKLY ONLINE.



6

7



Do you know your limits?

CHILDREN MAY NOT UNDERSTAND THE NEGATIVE IMPACTS OF DEVICE OR GAME ADDICTION. TALK TO THEM OPENLY ABOUT HEALTHY HABITS AND ASK WHETHER OR NOT THEM SPENDING TIME ONLINE OR PLAYING A GAME IS AFFECTING THEIR SLEEP, PERFORMANCE AT SCHOOL, OR IF THEY ARE GENERALLY LOSING INTEREST IN OTHER ACTIVITIES. YOU MAY LEAD ON TO ENCOURAGING ALTERNATIVE ACTIVITIES AND DISCUSSING THE INTRODUCTION OF TIME LIMITS WHICH AT HOME.



Term Dates

Summer Term 2025

Term Ends: Friday 18 July 2025

INSET Day - Monday July 21st

Autumn Term 2025

INSET Day - Monday 1st September

Tuesday 2nd September - Children return to school

Diary Dates

Wednesday 9th July - non- uniform (cakes)

Wednesday 9th July - Summer Fayre

Wednesday 9th July - Year 6 Leavers' Production- 9.15am

Wednesday 16th July - Year 6 Leavers' Assembly - 9.15am

Thursday 17th July - PTFA Beach Day

Friday 18th July - Year 6 Leavers' Mass



Family Support

Solihull
Family Hubs



A Family Hub is a place where children, young people and families can go for services, advice and to meet other families. Raising a family, being a parent or carer, or navigating life as a young person can be a challenge so staff in the hubs can put you in touch with different services in the area.

There are 4 Family Hubs in Solihull

- Elmwood- Smiths Wood
- Evergreen- Kingshurst
- Riverside- Chelmsley Wood
- Hatchford Brook- Elmdon

Scan here for more information on the Family Hubs website



Family Hubs are open to everyone and there will always be a safe space available for you if you need it. You can get help with many things from:



- parenting support and social activities
- seeing a midwife or a health visitor
- activities for young people
- support for children and young people with additional needs

The Solihull Start for Life Offer is a guide for everyone involved in a child's life from pregnancy to 2 years old. It includes information, advice, services and places to go to keep healthy, happy and safe in the first 1,001 days.

Email us: familyhubs@solihull.gov.uk

Call: 0121 704 6017

Follow us on Facebook: Solihull Family Hubs

Scan here for the Solihull Start for Life



Download the Solihull Family Hubs App, available on Apple Store and Google Play Store



Family Support

Solihull
Family Hubs



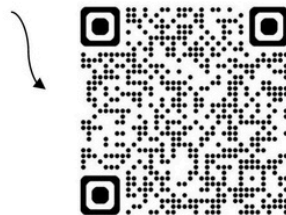
A Family Hub is a place where children, young people and families can go for services, advice and to meet other families. Raising a family, being a parent or carer, or navigating life as a young person can be a challenge so staff in the hubs can put you in touch with different services in the area.

Scan here for more information on the Family Hubs website or visit:
www.solihull.gov.uk/family-hubs



The Solihull Family Hubs app is available to download from the Apple Store and Google Play Store. It includes information on sessions at each of our hubs, online resources and much more. **Take a look today!**

Google Play



App Store





Family Support

Is your child SCHOOL ready?



Not sure if your child is fully prepared to start reception or secondary school?

The Family Support Service are holding **coffee mornings** to offer support to parents and carers whose children are:

Starting reception

- 8 July, 10-12, Riverside Family Hub
- 10 July, 12-2, Evergreen Family Hub
- 11 July, 9-12, Elmwood Family Hub
- 15 July, 9-12:30, Hatchford Brook Family Hub

Starting secondary

- 2 July, 9-12, Elmwood Family Hub
- 11 July, 11-1, Riverside Family Hub
- 16 July, 9-12:30, Hatchford Brook Family Hub
- 17 July, 12-2:, Evergreen Family Hub



Working
for Children
and Families
in Solihull



<https://bit.ly/4n47Wgt>



Solihull
METROPOLITAN
BOROUGH COUNCIL

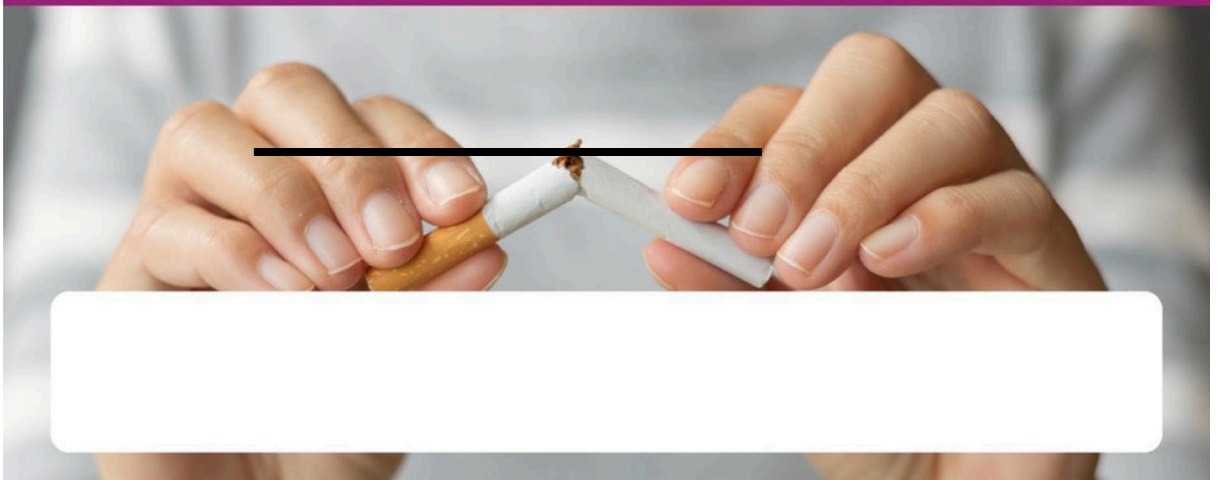


Family Support



Are you ready to Quit Smoking?

Smokefree Solihull are committed to helping you
quit smoking for good



**YOU ARE 3 TIMES MORE LIKELY TO QUIT
WITH SUPPORT FROM OUR PRACTITIONERS!**



Solihull
METROPOLITAN
BOROUGH COUNCIL

For more information call us on:
0121 740 1212
or visit our website:
www.smokefreesolihull.co.uk





Family Helpline

**Early Help support for families
and professionals in Solihull**

0121 788 4327

Live from 3 March 2025

Available Monday-Thursday 09:00-16:30,
Friday 09:00-16:00

Our dedicated team of duty workers support
with topics such as:

- Parenting and family guidance
- School attendance and support in coordinating Early Help assessments and plans
- Signposting to local services such as Solihull Family Hubs
- Child behavioural issues and social development
- Health and emotional wellbeing
- Referrals to Family Support Workers

For safeguarding concerns, such as if a child is at risk of being harmed, call the Solihull Multi-Agency Safeguarding Hub (MASH) on 0121 788 4300



Working
for Children
and Families
in Solihull





Family Support

UNDERSTANDING YOUR CHILD SOLIHULL APPROACH

inourplace  **NHS**

Supporting emotional health and wellbeing from 0-19+

Free online courses for all parents, carers, grandparents and teens

- Antenatal and postnatal baby bonding
- Understanding your child or young person
- Your child or young person with additional needs
- Teenager's feelings and brain development
- And lots more specialist courses

Designed by clinical psychologists in partnership with practitioners and parents

www.inourplace.co.uk




Residents of SOLIHULL

In paid partnership with:




Use Access Code
APPLEJACKS

£3



Super Sen CIC
'In it together'

Are you thinking of applying for PIP/DLA?
Do you have an upcoming review?
Is your child moving over from DLA to PIP?
Or do you just want to get more info for the future?
PREBOOK supersencic@gmail.com

15 spaces each session



A step by step guide to applying for PIP and DLA

Disability Living Allowance DLA	 Solihull Family Hubs	Personal Independence Payment PIP
Riverside Wed 7 th May 9:30-12pm		Hatchford Wed 25 th June 9:30-12pm
Elmwood Fri 4 th July 9:30-12pm		Riverside Mon 4 th Aug 12-2:30pm
Hatchford Wed 24 th Sep 9:30-12pm		Elmwood Fri 3 rd Oct 9:30-12pm